



## Introduction to ArcGIS Earth

E-Learning for the GIS Professional – Any Time, Any Place!

[geospatialtraining.com](http://geospatialtraining.com)

## Housekeeping Items

- Webinar duration
- Handouts and recording
- Audio
- Questions

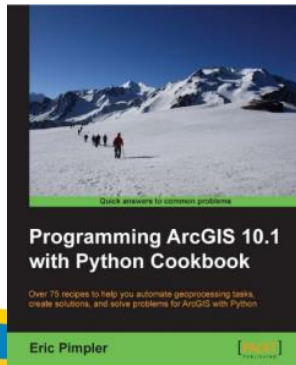
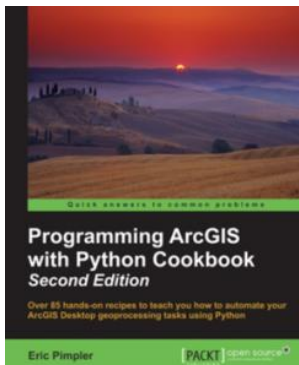
## Webinar Outline

- ArcGIS Earth Interface
- Navigation
- Supported GIS Data Formats
- Basemaps and Terrain
- Adding Layers
- Sketching and Labeling Features
- Measuring
- Sharing Your Work
- Search
- Settings
- Point Based Service Access
- What's Coming
- Demonstration



## About Me

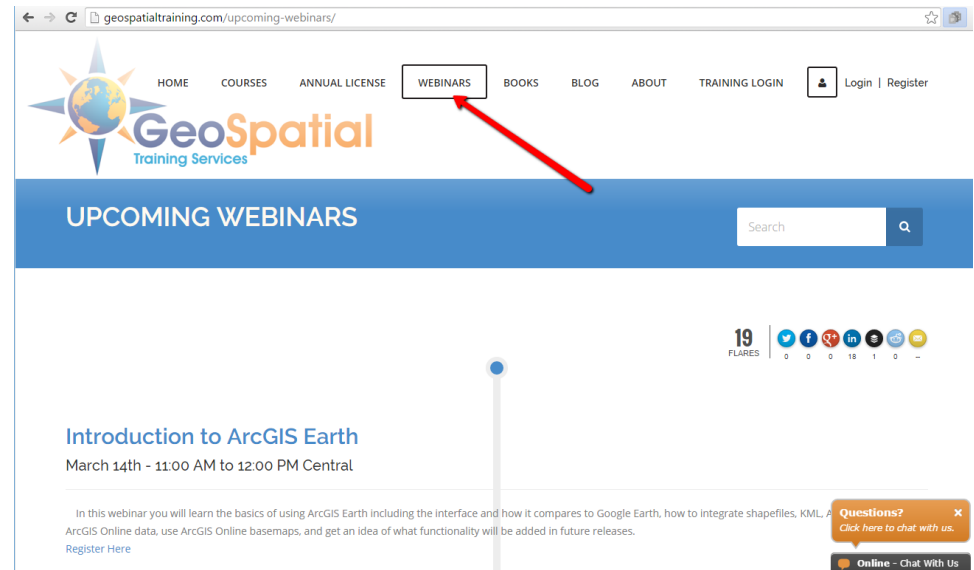
- Eric Pimpler
- Owner of Geospatial Training Services
  - <http://geospatialtraining.com>
- 25 years experience with GIS and Esri products
- Technical specialties
  - Programming ArcGIS with Python
  - ArcGIS Server Application Development with JavaScript



[eric@geospatialtraining.com](mailto:eric@geospatialtraining.com)  
Twitter - @gistraining

## Other Webinars Coming Soon

- Introduction to QGIS
  - March 29<sup>th</sup> – 11:00-12:00 PM Central
- Introduction to AppStudio
  - April 25<sup>th</sup> – 11:00-12:00 PM Central



The screenshot shows the website [geospatialtraining.com/upcoming-webinars/](http://geospatialtraining.com/upcoming-webinars/). The navigation bar includes links for HOME, COURSES, ANNUAL LICENSE, WEBINARS (highlighted with a red arrow), BOOKS, BLOG, ABOUT, TRAINING LOGIN, and a user profile icon with 'Login | Register' options. The main heading is 'UPCOMING WEBINARS' with a search bar. Below this, there are social media icons for Twitter, Facebook, LinkedIn, YouTube, and Email, with a '19 FLARES' indicator. The featured webinar is 'Introduction to ArcGIS Earth' on March 14th from 11:00 AM to 12:00 PM Central. The description states: 'In this webinar you will learn the basics of using ArcGIS Earth including the interface and how it compares to Google Earth, how to integrate shapefiles, KML, ArcGIS Online data, use ArcGIS Online basemaps, and get an idea of what functionality will be added in future releases.' A 'Register Here' link is provided. A 'Questions?' chat box is visible in the bottom right corner with the text 'Click here to chat with us.' and an 'Online - Chat With Us' button.



## The Basics

- Interactive 3D globe viewer for data exploration and visualization tool
  - Familiar to Google Earth users
- 2D and 3D
- Supports KML (including Network Links), shapefiles, ArcGIS Server and ArcGIS Online services
  - Feature layers, map services, image services, 3D object scene layers
- Multiple basemaps plus terrain
- Supports Web Mercator and WGS84 GCS
- Sketch and annotate features
- Draw and measure
- Share
- Search

## System Requirements

### Supported platforms

- Windows 7 SP1 Ultimate, Enterprise, Professional, and Home Premium (64 bit [EM64T])
- Windows 8 Basic, Pro, and Enterprise (64 bit [EM64T])
- Windows 8.1 Basic, Pro, and Enterprise (64 bit [EM64T])
- Windows 10 Home, Pro, and Enterprise (64 bit [EM64T])
- Windows Server 2008 SP2 Standard, Enterprise, and Datacenter (64 bit [EM64T])
- Windows Server 2008 R2 SP1 Standard, Enterprise, and Datacenter (64bit [EM64T])
- Windows Server 2012 Standard and Datacenter (64 bit [EM64T])
- Windows Server 2012 R2 Standard and Datacenter (64 bit [EM64T])

### DirectX

- ArcGIS Earth uses [DirectX](#) to provide high-performance map rendering. DirectX provides support for hardware and software rendering of graphics and is provided by the [supported Windows platforms](#).
- [Direct3D feature level 9\\_3](#)
- Default: DirectX 11 hardware support
- Falls back to DirectX 11 software rendering if hardware support is not available

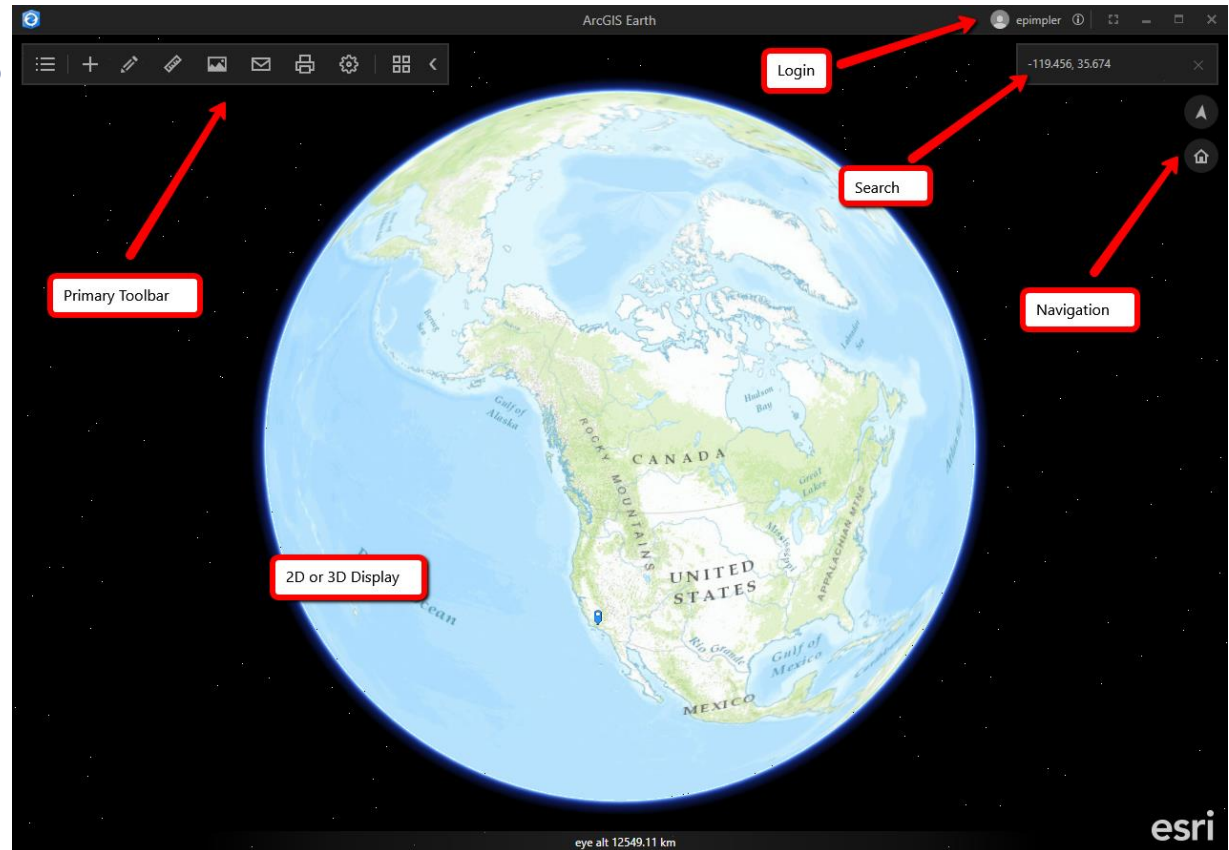
### Hardware requirements

- CPU speed: 2.2 GHz or higher; Hyper-Threading Technology (HTT) or multicore recommended.
- Processor: Intel Pentium 4, Intel Core Duo, or Xeon Processors; SSE2 minimum. Run this [Microsoft utility](#) from your Windows command prompt to check your processor.
- Disk space: 50 MB is needed for the application, and more is needed for cache and swap.
- Memory/RAM: 2 GB or higher.
- Display: 24-bit color depth.
- Screen resolution: 1024x768 or higher recommended at normal size (96 dpi).
- Swap space: Determined by the operating system; 500 MB minimum. ArcGIS Runtime will create cache files when used; additional disk space may be required.
- Video/Graphics adapter: 256 MB RAM minimum, 1 GB RAM recommended; NVIDIA, ATI, and Intel chipsets supported ; accelerated graphics card driver; Shader Model 4.0 minimum. Be sure to use the latest available driver.

<http://doc.arcgis.com/en/arcgis-earth/#systemrequirements>

## ArcGIS Earth Interface

- Google Earth alternative?
- Demonstration





## Navigation

- Many options for navigation
- Very similar to Google Earth
  - Interface
  - Mouse
  - Keyboard
  - Touch

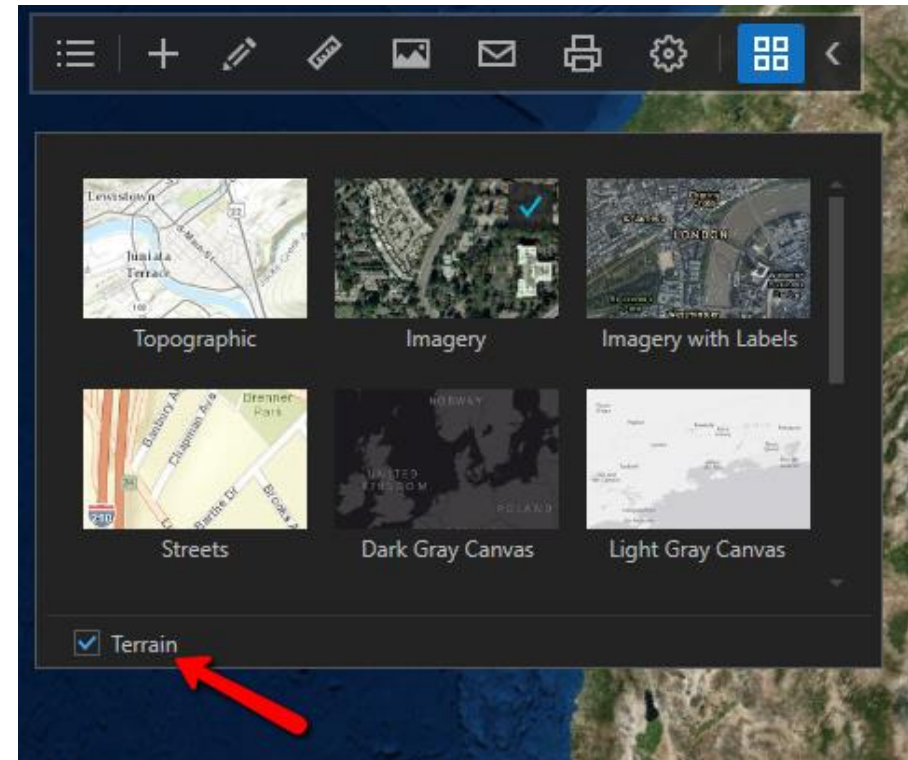
## Supported GIS Data Formats

- KML
  - Support for version 2.2 including Network Links
- Shapefiles
- ArcGIS Server and ArcGIS Online Services



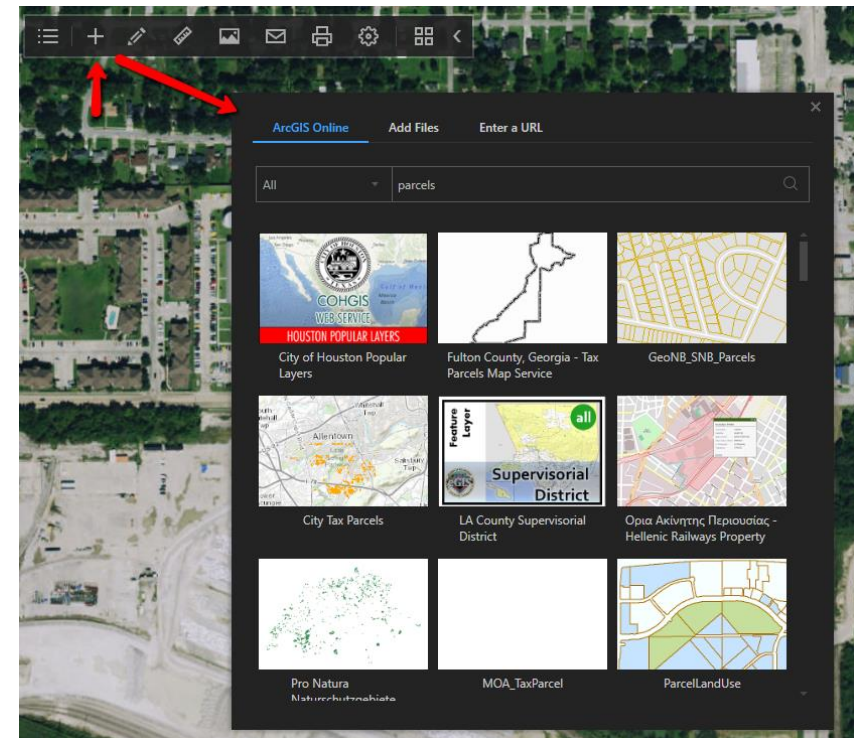
## Basemaps and Terrain

- Topographic
- Imagery
- Streets
- Canvas (Dark and Light)
- National Geographic
- Oceans
- OpenStreetMap
- USA Topo Maps
- USGS National Map
- Terrain – Provides the elevation reference



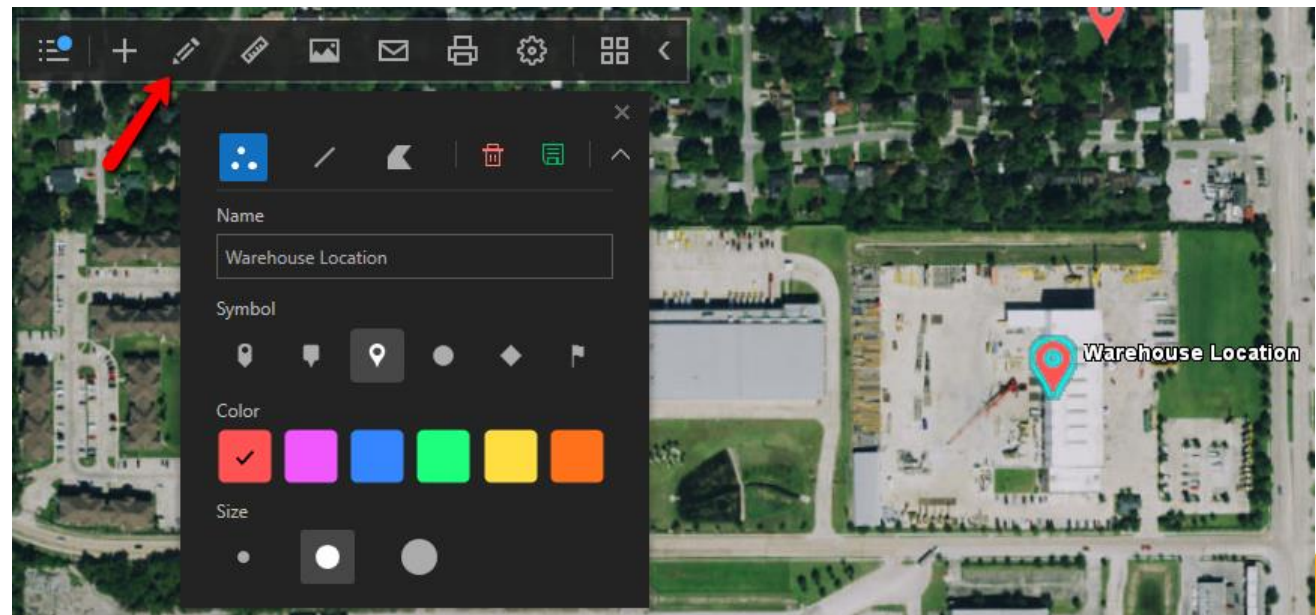
## Adding Layers

- ArcGIS Online
  - Public, My Content, My Groups, My Organization (same as ArcGIS Online)
- Files
  - KML, KMZ, Shapefiles
- URL
  - ArcGIS Server service
  - KML endpoint (service or file)



## Sketching and Labeling Features

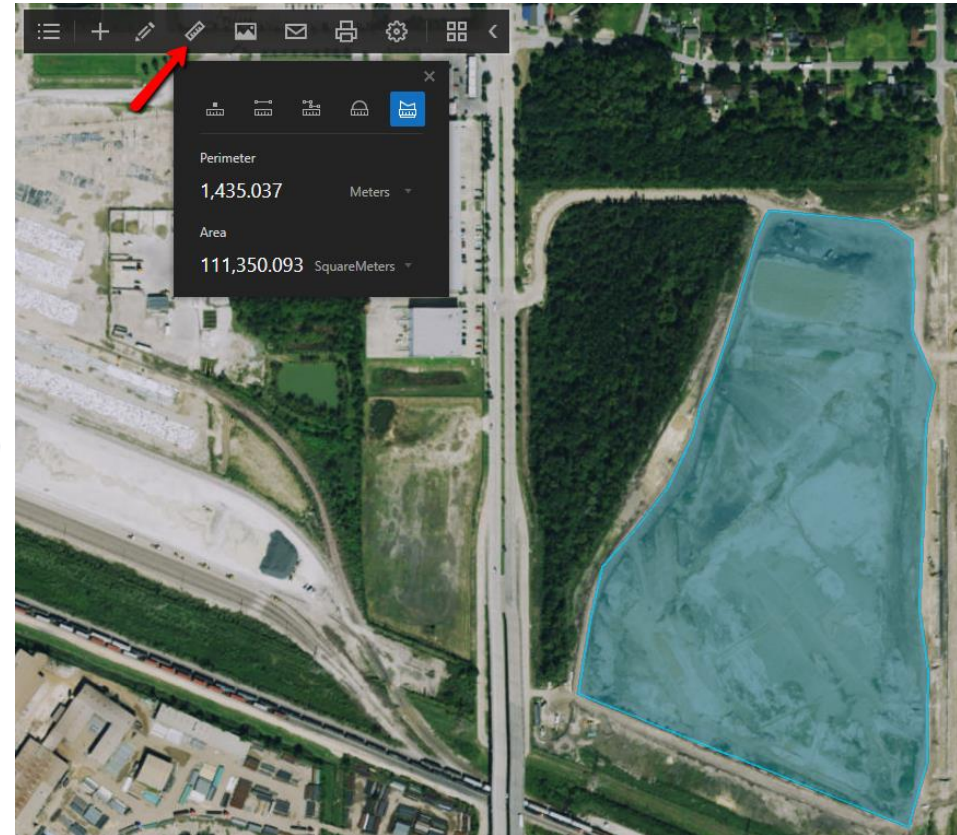
- Points, lines, polygons
- Label
- Define symbols, colors, size, transparency
- Save to TOC
  - Not saved to file





## Measuring

- Measure points, lines, polygons, circles
- Change units of measure
- Polygons and Circles
  - Perimeter and area
- Length of a line or path (more than 2 pts)
- Longitude/Latitude of a point



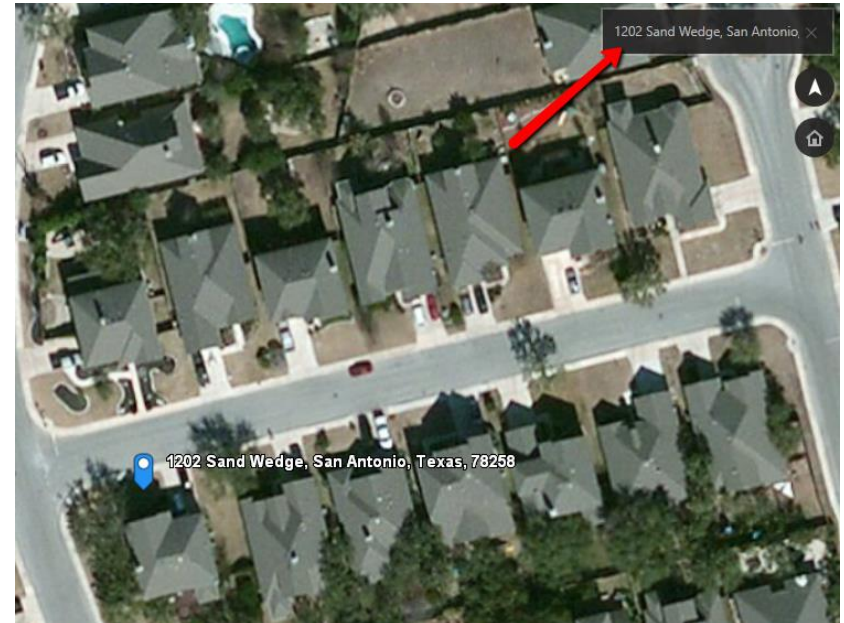
## Sharing Your Work

- Email view
  - Screenshot of view as email attachment
- Save view as image
  - JPG, PNG, TIF
- Print



## Search

- Uses Esri World Geocoding Service and AGOL Geosearch service
- Address
- City
- County
- Postal Code
- Lat/Long Coordinates
- Points of Interest and Landmarks
  - Grand Canyon



## Settings

- General

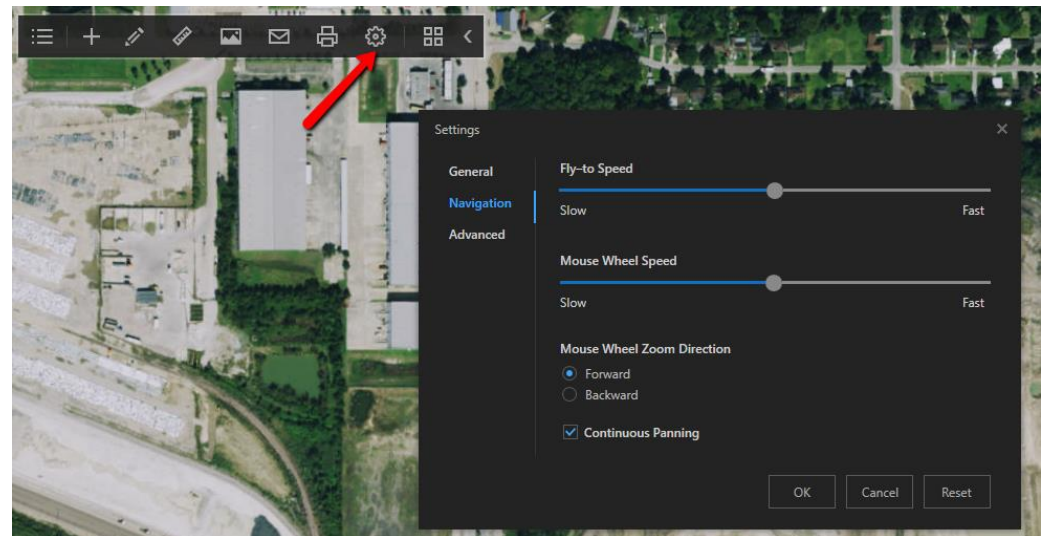
- Default Portal URL
- Startup view
- Spatial reference

- Navigation

- Fly to speed
- Mouse wheel speed
- Mouse wheel zoom direction

- Advanced

- Proxy settings



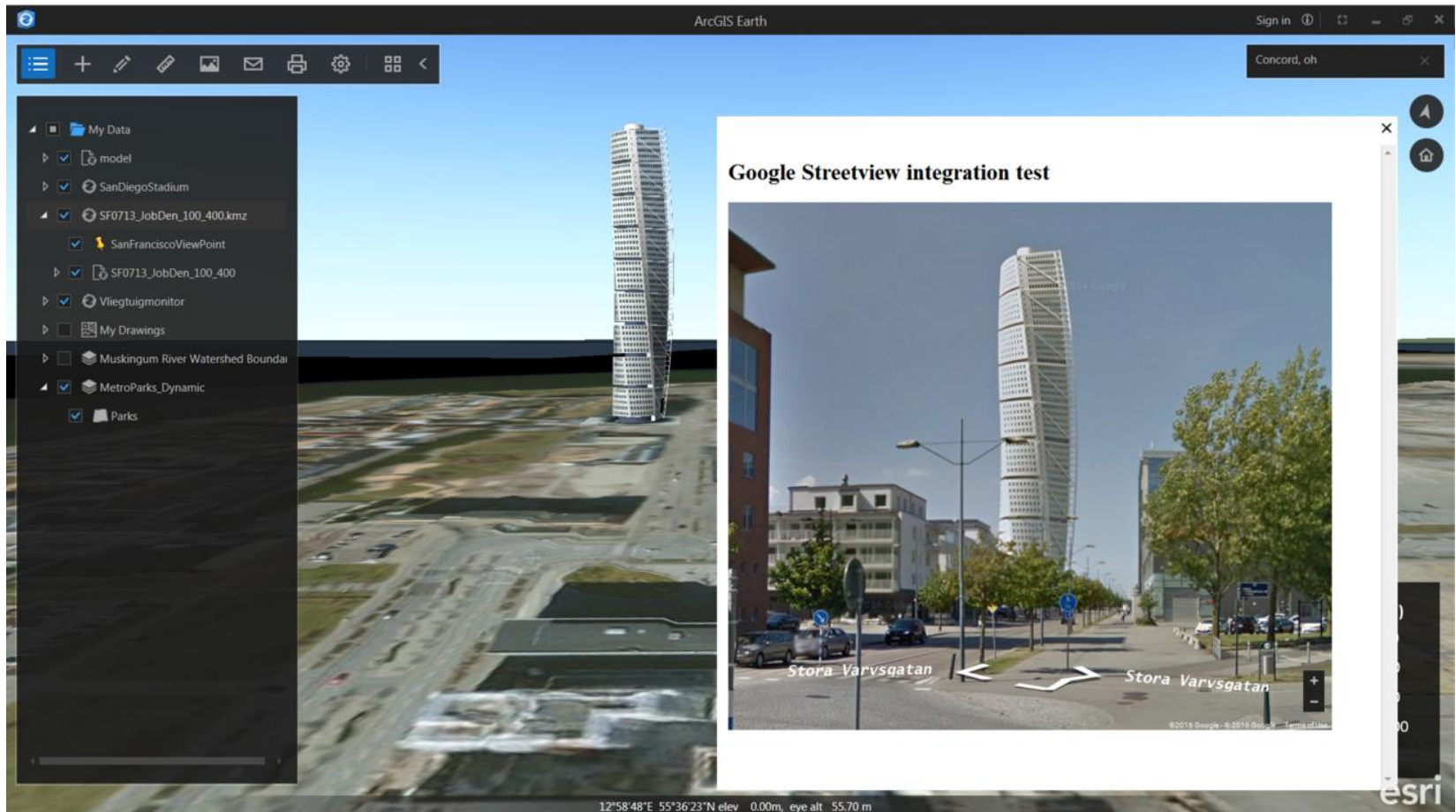


## Point Based Service Access

- Additional information about point locations
  - Google Street View, What3Words, Mapillary
- Pop-up window showing information about a point location returned by a service
  - Service must return KML – KML displayed in the pop-up window
  - Many services don't return KML so additional steps needed
    - <https://blogs.esri.com/esri/arcgis/2016/03/08/point-based-service-access-with-arcgis-earth/>
- CTRL-RIGHT-CLICK to invoke the service
  - Latitude, Longitude, Elevation are passed to the service
- ArcGISEarth.exe.config
  - C:\Users\\Documents\ESRI\ArcGISEarth
  - serviceURL element



## Point Based Service Access



## What's Coming in Future Releases

- Offline use
- Maptours
- Timesliders
- Support for WMS



## Help Links

- Product page- <http://www.esri.com/software/arcgis-earth>
- Help documentation - <http://doc.arcgis.com/en/arcgis-earth/>
- GeoNet forum: [http://j.mp/Earth1\\_0Forum](http://j.mp/Earth1_0Forum)
- Twitter - @ArcGISEarth
- Slideshare - <http://www.slideshare.net/ChrisAndrews11/introducing-arcgis-earth-january-2016>

[Learn More](#)

- Upcoming Classes
  - Introduction to ArcGIS Earth
- ½ Day Class
- Classroom
  - May 18<sup>th</sup> – Phoenix
  - June 16<sup>th</sup> – Denver
  - August 8<sup>th</sup> – Helena, MT
- Live, Online
  - May 4<sup>th</sup>
  - June 1st

## Introduction to ArcGIS Earth

- Course Modules
  - Module 1: Introduction to ArcGIS Earth
  - Module 2: ArcGIS Earth Navigation, Basemaps, and Search
  - Module 3: Adding Layers To the View (KML, Shapefiles, CSV, ArcGIS Server, ArcGIS Online)
  - Module 4: Sketching, Symbolizing, and Labeling Features
  - Module 5: Measuring Distances and Areas
  - Module 6: Sharing Your Work
  - Module 7: What's Coming in Future Versions
- <http://geospatialtraining.com/introduction-to-arcgis-earth/>



## Questions

- Any questions about today's webinar?
- All our webinars will be recorded for later viewing.
- Questions after the webinar?
  - [eric@geospatialtraining.com](mailto:eric@geospatialtraining.com)
  - @gistraining on Twitter

